

CRESTWOOD NORTH REPLAT TWO

BEING A REPLAT OF TRACT "A", CRESTWOOD NORTH REPLAT, ACCORDING TO THE PLAT THEREOF, AS RECORDED IN PLAT BOOK 125, PAGES 199 AND 200 OF THE PUBLIC RECORDS OF PALM BEACH COUNTY, FLORIDA, LYING IN SECTION 15, TOWNSHIP 43 SOUTH, RANGE 41 EAST, VILLAGE OF ROYAL PALM BEACH, PALM BEACH COUNTY, FLORIDA

6

STATE OF FLORIDA
 COUNTY OF PALM BEACH
 THIS PLAT WAS FILED FOR
 RECORD AT _____ M.
 THIS _____ DAY OF _____
 A.D. 2020, AND DULY RECORDED
 IN PLAT BOOK _____ ON
 PAGES _____ AND _____

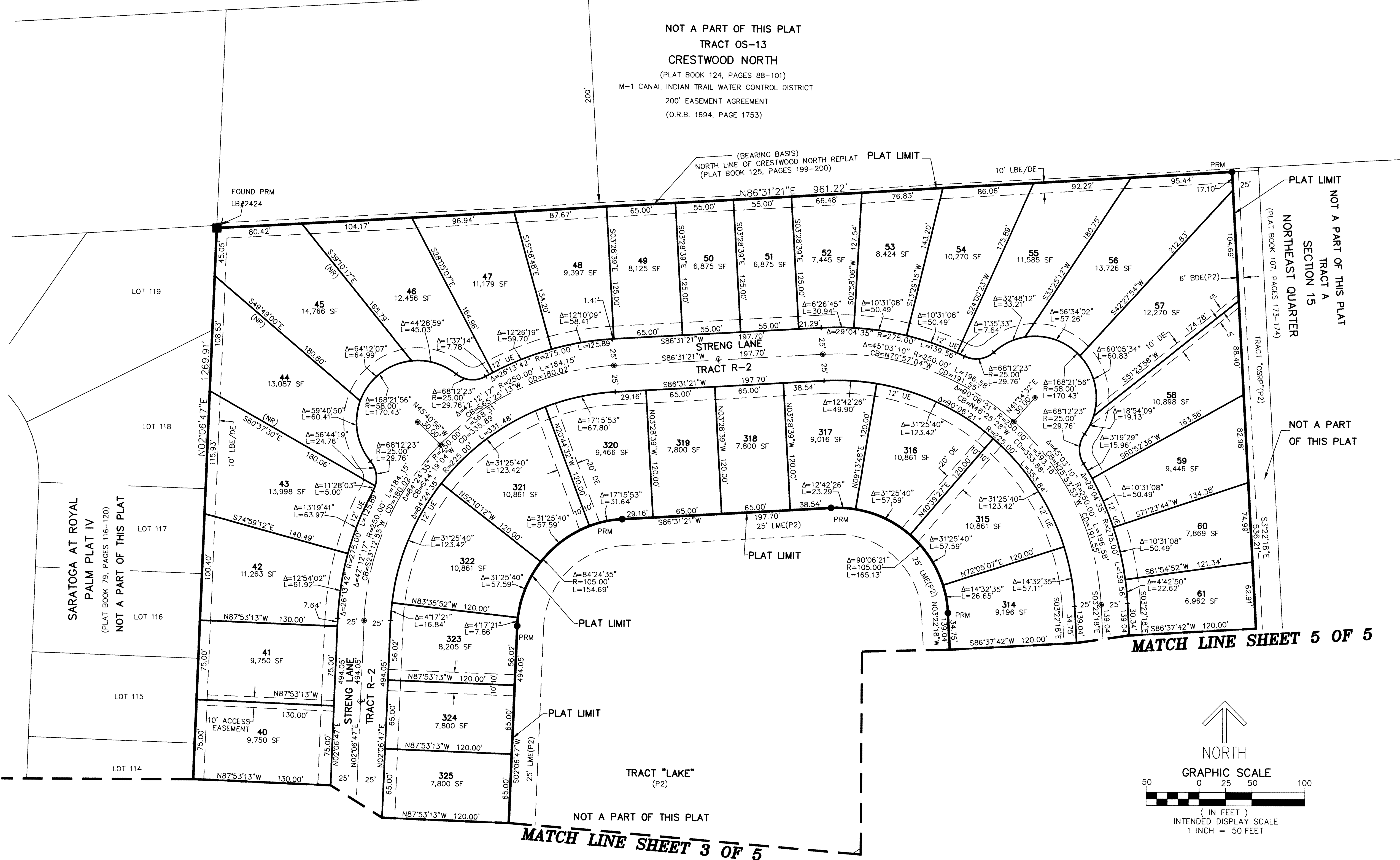
SHARON R. BOCK
 CLERK AND COMPTROLLER

BY: _____
 DEPUTY CLERK

SHEET 4 OF 5

THIS INSTRUMENT PREPARED BY
 DAVID P. LINDLEY
 OF
CAULFIELD and WHEELER, INC.
 SURVEYORS - ENGINEERS - PLANNERS
 7900 GLADES ROAD, SUITE 100
 BOCA RATON, FLORIDA 33434
 OFFICE (561)392-1991 FAX (561)750-1452
 CERTIFICATE OF AUTHORIZATION NO. LB 3591
 JANUARY - 2020

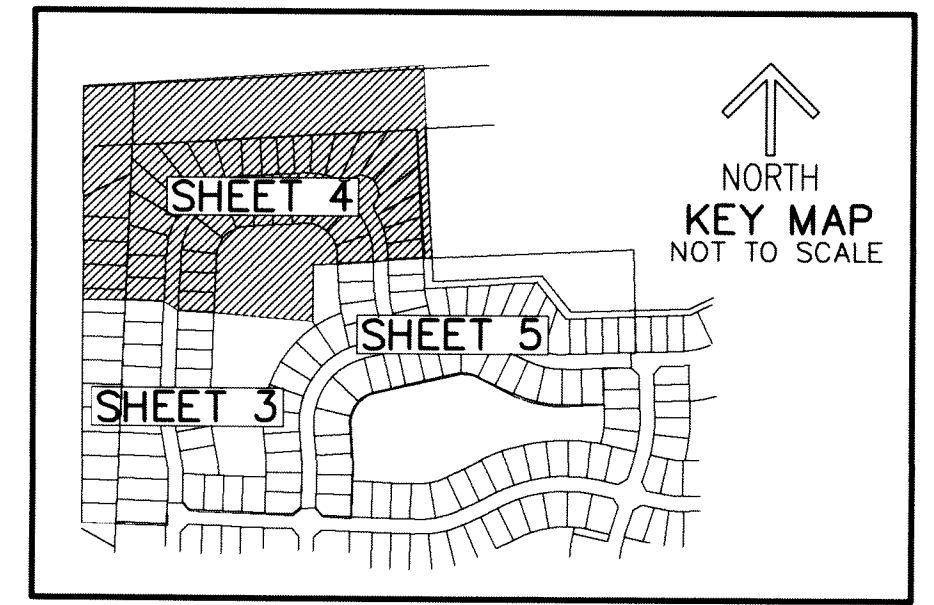
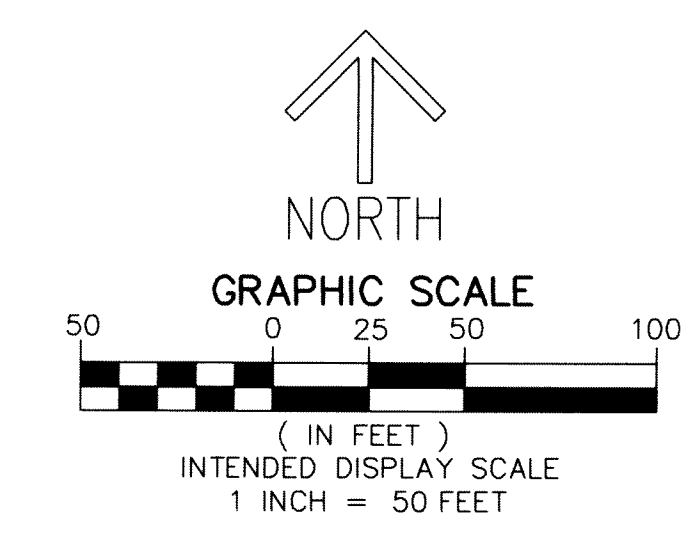
NOT A PART OF THIS PLAT
 TRACT OS-13
 CRESTWOOD NORTH
 (PLAT BOOK 124, PAGES 88-101)
 M-1 CANAL INDIAN TRAIL WATER CONTROL DISTRICT
 200' EASEMENT AGREEMENT
 (O.R.B. 1694, PAGE 1753)



- LEGEND/ABBREVIATIONS**
- ⊕ - CENTERLINE
 - Δ - DELTA (CENTRAL ANGLE)
 - BDE - BUFFER DRAINAGE EASEMENT
 - CB - CHORD BEARING
 - CD - CHORD DISTANCE
 - DE - DRAINAGE EASEMENT
 - FPL - FLORIDA POWER & LIGHT CO.
 - L - ARC LENGTH
 - LB - LICENSED BUSINESS
 - LMAE - LAKE MAINTENANCE ACCESS EASEMENT
 - LME - LAKE MAINTENANCE EASEMENT
 - LBE - LANDSCAPE BUFFER EASEMENT
 - N/A - NOT APPLICABLE
 - (NR) - NON RADIAL LINE
 - O.R.B. - OFFICIAL RECORD BOOK
 - R - RADIUS
 - SF - SQUARE FEET
 - SO. FT. - SQUARE FEET
 - UE - UTILITY EASEMENT
 - PRM - DENOTES PERMANENT REFERENCE MONUMENT SET 4" X 4" X 24" CONCRETE MONUMENT WITH ALUMINUM DISK STAMPED "C&W PRM LB3591" UNLESS OTHERWISE NOTED
 - PRM - DENOTES PERMANENT REFERENCE MONUMENT SET 5/8" IRON ROD WITH PLASTIC CAP STAMPED "C&W PRM LB3591" UNLESS OTHERWISE NOTED
 - ⊙ PCP - DENOTES PERMANENT CONTROL POINT NAIL AND DISK STAMPED PCP LB3591
 - (P) - CRESTWOOD NORTH
 PLAT BOOK 124, PAGES 88-101
 PALM BEACH COUNTY RECORDS
 - (P2) - CRESTWOOD NORTH REPLAT
 PLAT BOOK 125, PAGES 199 AND 200
 PALM BEACH COUNTY RECORDS

MATCH LINE SHEET 5 OF 5

MATCH LINE SHEET 3 OF 5



SARATOGA AT ROYAL
 PALM PLAT IV
 (PLAT BOOK 79, PAGES 116-120)
 NOT A PART OF THIS PLAT

NOT A PART OF THIS PLAT
 TRACT A
 SECTION 15
 NORTHEAST QUARTER
 (PLAT BOOK 107, PAGES 173-174)

NOT A PART OF THIS PLAT

TRACT "LAKE"
 (P2)